



Karlštejn

Plzeň

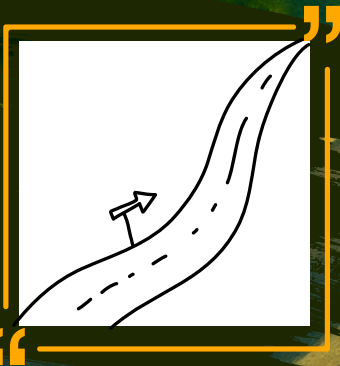
Bohemian
ROADTRIP

Stone & Crown

Leaving the city behind, the road begins to rise.

A smooth climb through forest curves rewards you with flow, focus, and sweeping views.

And just when you think you've seen it all the treetops part and a castle appears.



Karlštejn Castle

Your memories belong here.

One photo at a time...



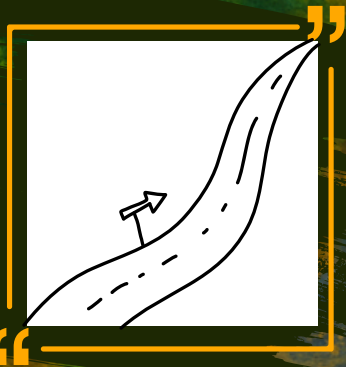
...start your own gallery.

The Hidden Majesty

Leaving the castle behind, the road narrows, with mountains rising close on either side.

A smooth climb through wooded curves rewards you with pace and balance.

At the top, hidden deep among the trees, stands a quiet cross, guarding what lies beneath.



Monastery of St. John



Your drive, your story.

Fill these pages...



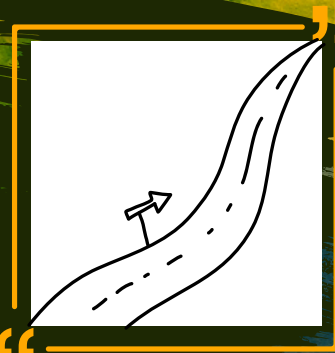
...with your favorite moments.

Hungry yet?

The curves keep coming, but the forest soon fades away.

a lush tree line guiding the road now, hiding birds and wide open land. Soon, you'll roll into a city.

A brewery waits just ahead with history, local flavor, and a table set for you.





The image is a vibrant, painterly illustration of a green and white Pilsner Urquell bus driving through the Pilsen Gate in Pilsen, Czech Republic. The bus, which features the brand's logo and name, is positioned in the foreground, moving towards the left. The gate itself is a grand, ornate stone structure with two large arches, each topped with a decorative wrought-iron grille. Above the arches, the years 'MDCCCXIII' and 'MDCCCXIV' are inscribed. Through the arches, a view of the Pilsen cityscape is visible, including a prominent church spire. To the right of the gate stands a large, light-colored building with multiple windows. The scene is set against a clear blue sky with a few wispy clouds. The overall style is that of a classic oil painting, with rich colors and detailed shading.

Pilsen

Your drive, your story.

The background is a detailed oil painting of a distillery's interior. Several large, polished copper stills with bulbous bases and tall, straight necks are arranged in a row. A walkway with a metal railing runs along the back wall, which features several rectangular windows. The floor is made of light-colored square tiles. The lighting is warm and focused, highlighting the metallic sheen of the stills.

For what the camera sees...

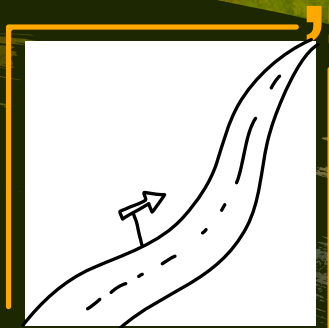
...but only you will remember.

Castle adventure

After lunch, and a lesson or two in brewing tradition, the road opens up again.

You pass lakes that shimmer like glass, winding through fields where the air smells like freedom.

A stone fortress comes without warning, guarding its surroundings.



Zvíkov Castle

A shared story of history.

No filters, no retakes...



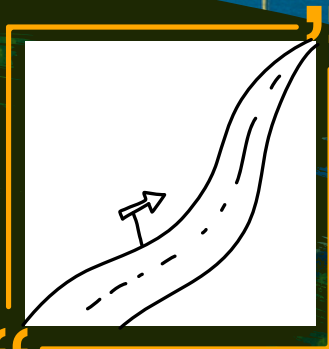
...just history as it happened.

Bridges & Castles

The road slips into shadow, winding through deep forest and hills.

Bridges rise in steel arcs above the river bold and sudden.

You chase the water's edge, carving through turns and then, past the last bridge, a castle waits.



Orlík nad Vltavou

A shared story of history.



The goal aren't always views...



...capture what moved you.